

DANKODE[®]

PNEUMATIC MARKER DV7/1



USER MANUAL

SAFETY RULES AND WARNINGS

ATTENTION! Read all the danger warnings and the operating instructions.

In case of non-compliance with safety warnings or operating instructions can generate hazardous situations with risk of injury or damage to objects and/or people. Keep all safety warnings and operating instructions for future reference.

SECURITY OF WORK STATION

Keep clean and orderly the workplace. Clutter and dark areas may cause accidents.

SAFETY OF THE PEOPLE

Keep children and other people away: during the use of the pneumatic marker any distractions can result in loss of control resulting in risk of injury or damage to objects and/or people.

OPERATOR SAFETY

It is important to focus on what you are doing and use carefully the pneumatic marker during work operations. Do not use the pneumatic marker in case of fatigue or under the influence of drugs, alcohol and/or medicines.

ALWAYS USE CORRECTLY THE PNEUMATIC MARKER

Only perform animal marking jobs for which this pneumatic marker was built. Do not ever use it for different works from this manual. Never point the pneumatic marker to people or different things from the area to be tattooed.

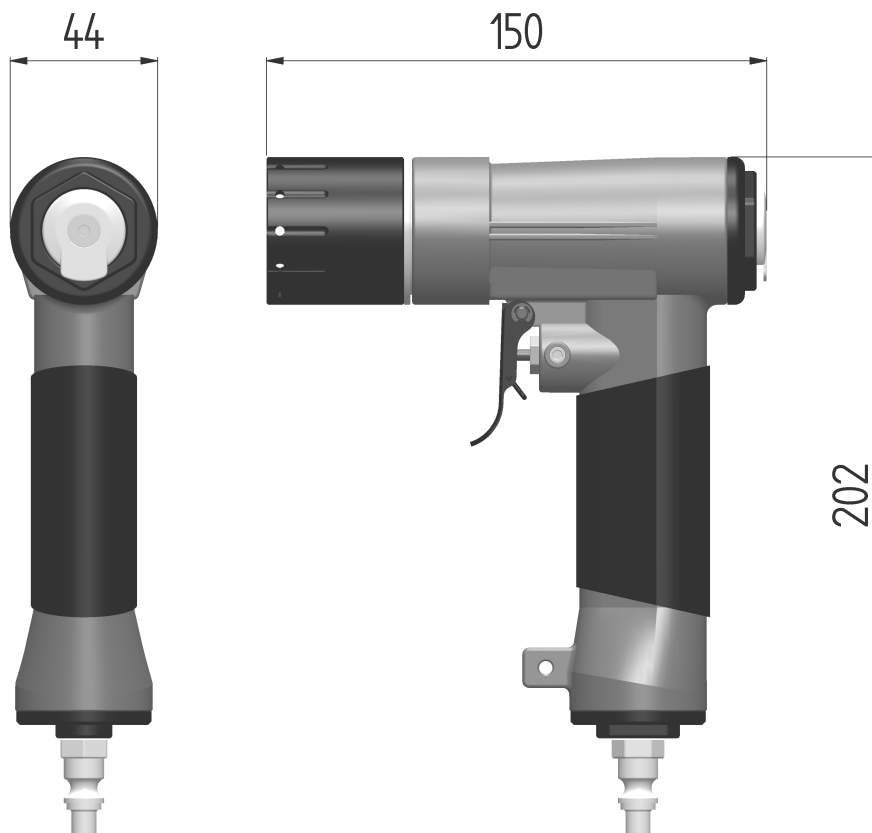
KEEP HANDS AND BODY AWAY FROM THE PUNCHES

A shot may inadvertently start resulting in injury to the operator.

INSERT THE SAFETY DEVICE

During the breaks between marking sessions, at the end of the job and during the connection of the pneumatic marker with the compressed air always engage the safety device placed behind the trigger of the pneumatic marker (see Operating Instructions).

TECHNICAL SPECIFICATIONS



DIMENSIONS

H x W x D: 202 x 44 x 150 mm
Weight: 0,79 Kg
Working pressure: 5 – 8 bar (0.5 – 0.8 Mpa)
Air on cycle: 0.27 NI/ciclo (6 bar)

NOISE POWER

Dir. 89/392 CEE – prEN 12549 (1999) – UNI EN ISO 3744 (1997)

LwA: 80.3 dB
LpA 60S 1M : 78.9 dB

VIBRATIONS

Dir. 89/392 CEE – ISO/FDIS 8662-11 (1999)

ah.w.3s : lower than 2.5 m/s²

MAINTENANCE

The DV 7/1 pneumatic marker requires no difficult maintenance. After use, remove the punches from the pneumatic marker (see operating instructions) and clean them thoroughly by washing with hot water and alcohol or sodium bicarbonate; with the help of a brush to remove all the ink residues. Let them dry completely, oil them and store in a dry place. Clean all the external parts of the pneumatic marker using water and alcohol, dry and keep it in a dry and safe place. **WARNING !** Never immerse the pneumatic marker in the water or oil and prevent the entry of fluid in the supply ducts and exhaust air openings. It is very important to supply the pneumatic marker with filtered, lubricated and dried air to prevent dirt and condensation inside the markers that could cause malfunctions. If your air compressor machine does not include a lubricator group is recommended to enter some air compressor oil drops in the supply nipple before using the marker. Avoid using any other type of lubricant (Svitol, WD40, spray etc.) or synthetic antitrust to prevent the corrosion of the sealing gaskets.

For the extraordinary maintenance and/or repair, as well as spare parts supply, please contact:

DANKODE s.r.l.

Via I° Maggio 5/11, 40037 Sasso Marconi (BO)

Tel: (+39) 0516777832 Fax: (+39) 0516776301

<http://www.dankode.com/vet> - info.vet@dankode.com

Using of non-original parts and unauthorized assistance will invalidate the warranty period, in addition to the possible damage to other components of the pneumatic marker.

OPERATING INSTRUCTIONS

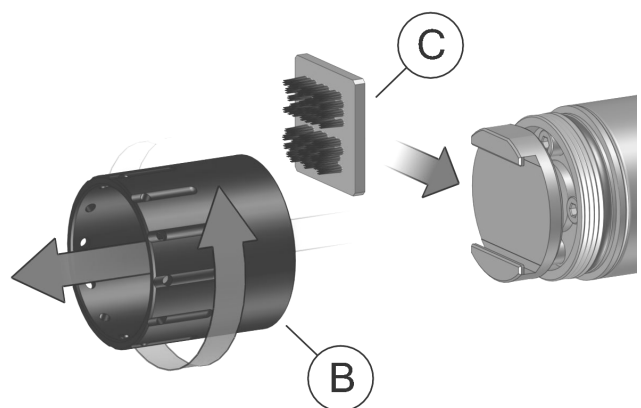
1 – SAFETY DEVICE



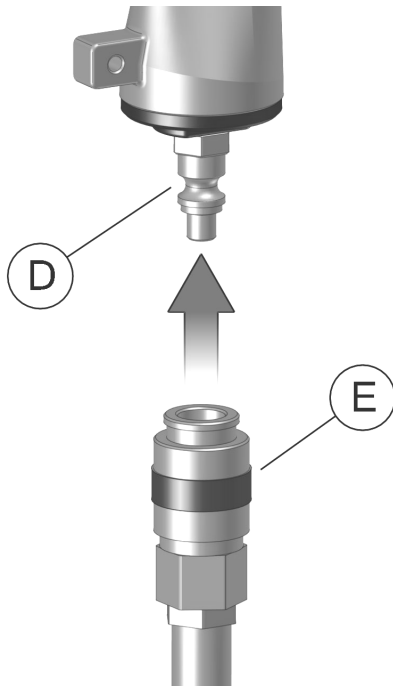
Before start any maintenance or exchange punches it is very important to disconnect the air supply pipe from the pneumatic marker. Then make sure to have turned up the safety device (A) behind the trigger (see figure). When the safety device is inserted the marking operation is locked.

2 – INSTALLATION OF THE PUNCHES

Unscrew the housing ring (B) by turning it counterclockwise and pull it out from the front of the marker. Insert the punches (C) corresponding to the month of the birth (see figure). The direction of the assembly of the punches must permit the reading of the code from the back side of the marker. Remount the housing ring (B) screwing it clockwise.



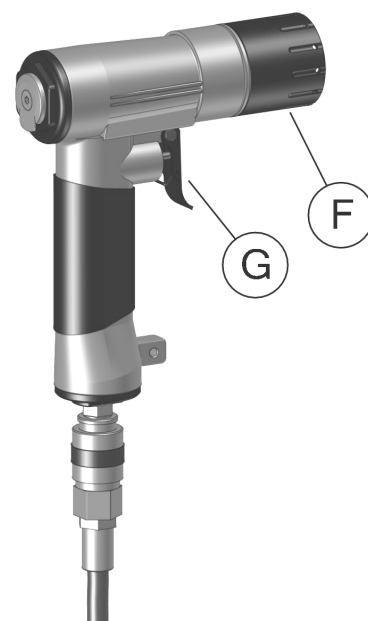
3 – COMPRESSED AIR SUPPLY

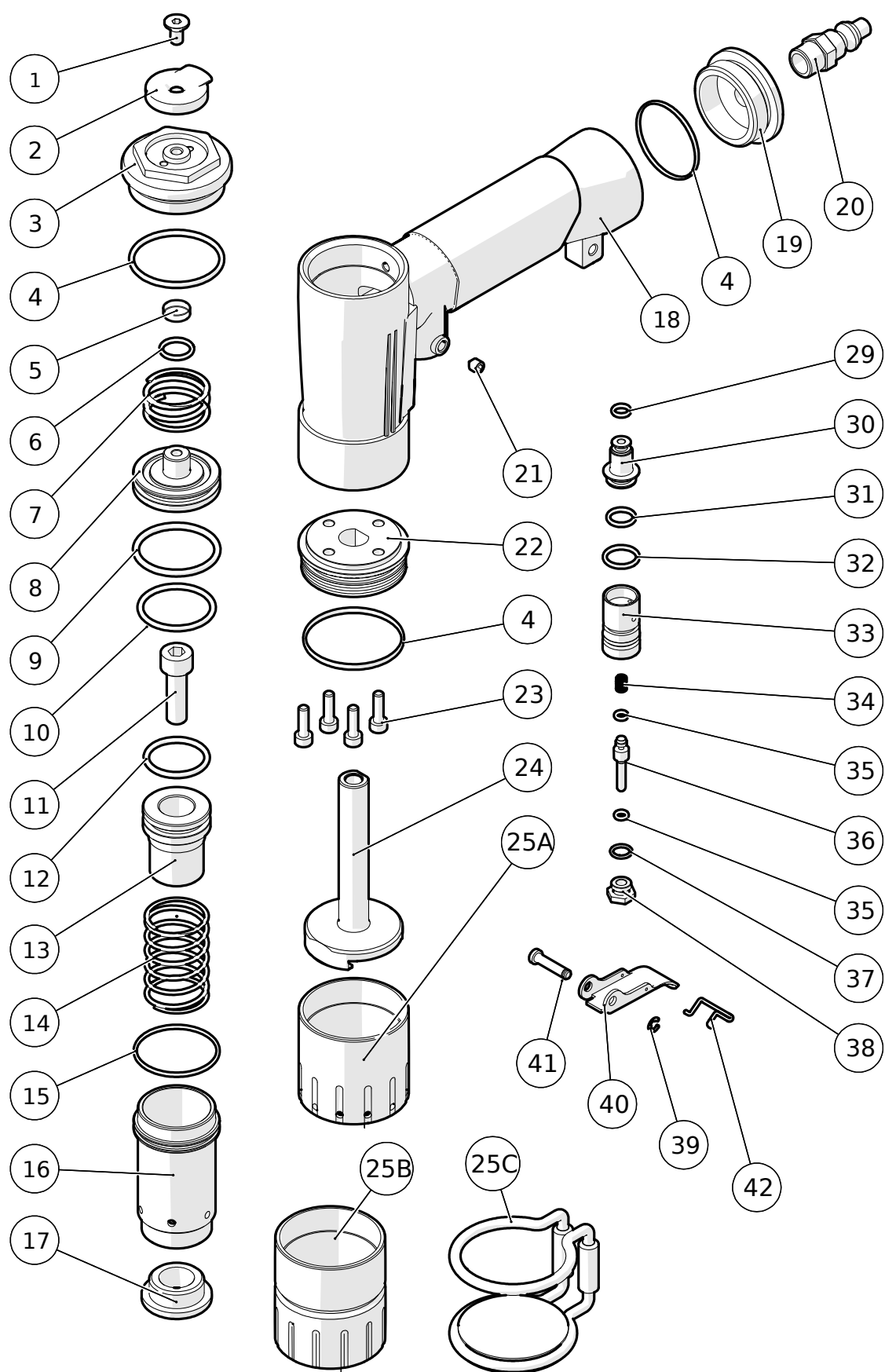


Connect the pneumatic marker to the compressed air pipe (E) by the quick nipple (D) in the lower part of the marker (see figure). During the use of the marker it is important to ensure that the supply air pressure never drops below 5 bar and does not exceed 8 bar. Use only filtered, lubricated and dried air; the use of any other power fuels such as compressed or flammable gas can cause explosions with danger for persons.

4 – TATTOO MARKING OPERATION

Spray the tattoo ink onto the animal's skin in the area to be tattooed, center the housing ring (F) on the animal's thigh on the ink stain; press the marker to the animal's skin and pull the trigger (G) (see figure). When the tattoo has occurred repeatedly massaging the newly tattooed skin of the animal to facilitate ink penetration.

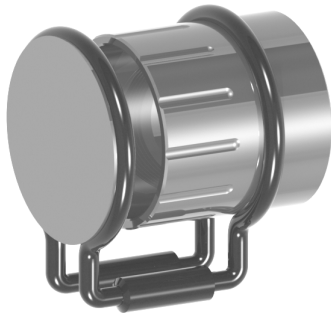




N°	COD.	DESCRIPTION	Q.ty	N°	COD.	DESCRIPTION	Q.tY
1	5000640501	SCREW M5 x 10 UNI 5931	1	21	5001130500	SCREW M5 x 6 INOX - UNI 5927	1
2	1013400010	AIR MUFFLER	1	22	4006300030	FRONT FLANGE	1
3	4003700020	BACK COVER	1	23	5000050405	SCREW M4 x 14 INOX - UNI 5931	4
4	5030100053	O-RING 3131	3	24	4016200110	SHAFT	1
5	4012200120	VALVE ABSORBER	1	25A	4007100071	HOUSING RING	1
6	5030100011	O-RING 2043	1	25B	4007100120B	EAR HOUSING RING	1
7	4010400090	VALVE RETURN SPRING	1	29	5030100004	O-RING 2018	1
8	4018400030	PISTON VALVE	1	30	4018400020	TRIGER VALVE	1
9	5030100051	O-RING 3118	1	31	5030100009	O-RING 108	1
10	5030100049	O-RING 3106	1	32	5030100012	O-RING 114	1
11	5000050808	SCREW M8 x 20 INOX - UNI 5931	1	33	4003800090	TRIGGER BODY	1
12	5030100044	O-RING 3087	1	34	4010400100	TRIGGER SPRING	1
13	4012700020	PISTON	1	35	5030100000	O-RING 2007	2
14	4010400120	PISTON RETURN SPRING	1	36	4012400020	VALVE PIN	1
15	5030100025	O-RING 2125	1	37	5030100005	O-RING 2021	1
16	4003200020	CYLINDER	1	38	4003700030	TRIGGER COVER	1
17	4000500050	ABSORBER RING	1	39	5009200005	TRIGGER SEEGER D 3.2	1
18	4003800080	BODY	1	40	4007500010	TRIGGER	1
19	4016900020	COUPLING PLUG	1	41	4012400010	TRIGGER PIN	1
20	5046900001	QUICK AIR NIPPLE	1	42	4010400110	SAFETY DEVICE	1

ACCESSORIES

ASL EAR TATTOO KIT



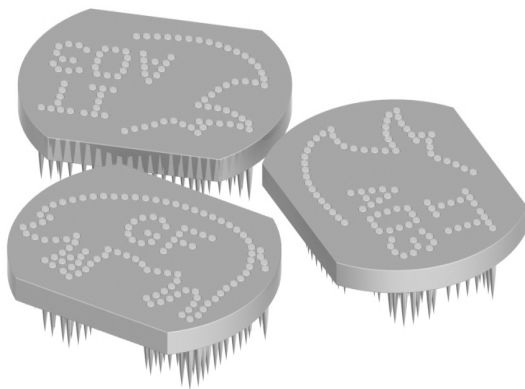
Housing contrast ring (42 mm length) for ASL Ear Tattoo complete with ear contrast disk. To tattoo the ear a "special punches plaque" must be used.

PECKER[®] SPRAY TATTOO INK

Using of PECKER[®] Spray Tattoo Ink is highly recommended to obtain very dark, legible and permanent tattoos.



PUNCHES AND CUSTOMIZED PLAQUES



A wide variety of personalized punches, series and plaques can be produced. Standard alpha-numerical punches in different dimensions and character height are available. All the produced punches present an high pins density to allow better readability when the animal, within the tattoo, grows up. All plates are CNC machined with high quality brass while pins are grinded stainless steel made.

WARRANTY

The product is guaranteed for a period of twelve (12) months from the date of purchase. The warranty covers the repair or replacement of markers that present manufacturing defects.

The warranty shall apply only if this guarantee certificate, filled in all its parts by the purchaser and accompanied by valid proof of purchase (bill of sale for the user), will be presented when intervention is required. The product must be returned in its original packaging, complete with all accessories. The serial number on the product (higher on the sticker and a copy engraved on the body) has not to be deleted in any way nor made illegible otherwise the warranty voids. The warranty does not apply in case of damages caused by neglect, use or installation not in accordance with the operation instructions, tampering, modification of the product or serial number, damage due to accidental causes or negligence by the purchaser with particular reference to the external parts.

Parts subject to wear are warranty excluded. After the warranty period, assistance interventions will be explicated charging for the replaced parts, the hand labor and transport costs, according to the rates in force.

WARRANTY



CONFORMITY DECLARATION

The manufacturer of pneumatic markers:

DANKODE s.r.l.

Declares under its own responsibility that its products are manufactured in compliance with standards: EN 292 – parts 1 e 2 and directive 89/392/CEE and its subsequent amendments.

Distributor:

DANKODE s.r.l.

Via I° Maggio 5/11, 40037 Sasso Marconi (BO) - Italy

Tel: (+39) 0516777832 Fax: (+39) 0516776301

<http://www.dankode.com/vet> - info@dankode.com